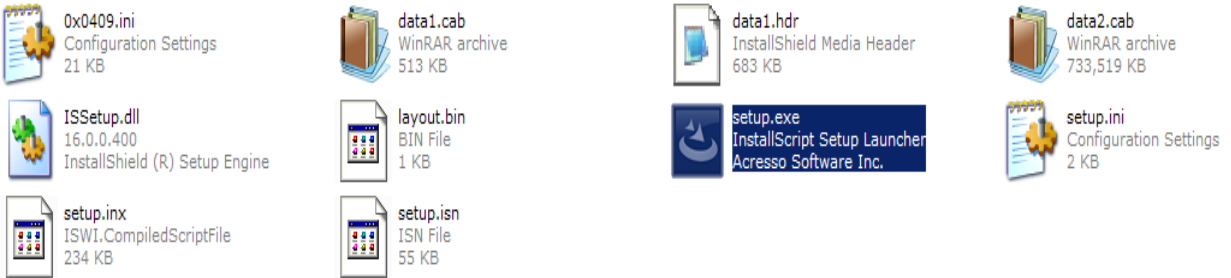
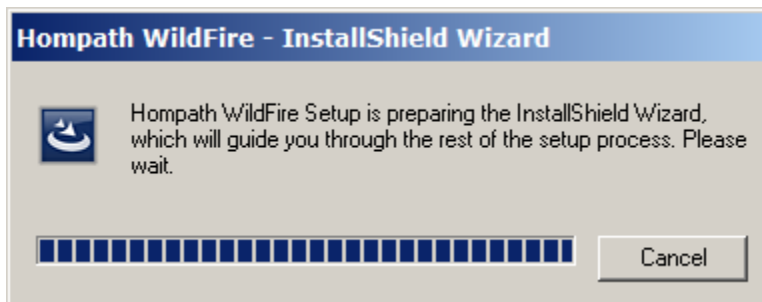


Hompath Software Installation steps (All Versions)

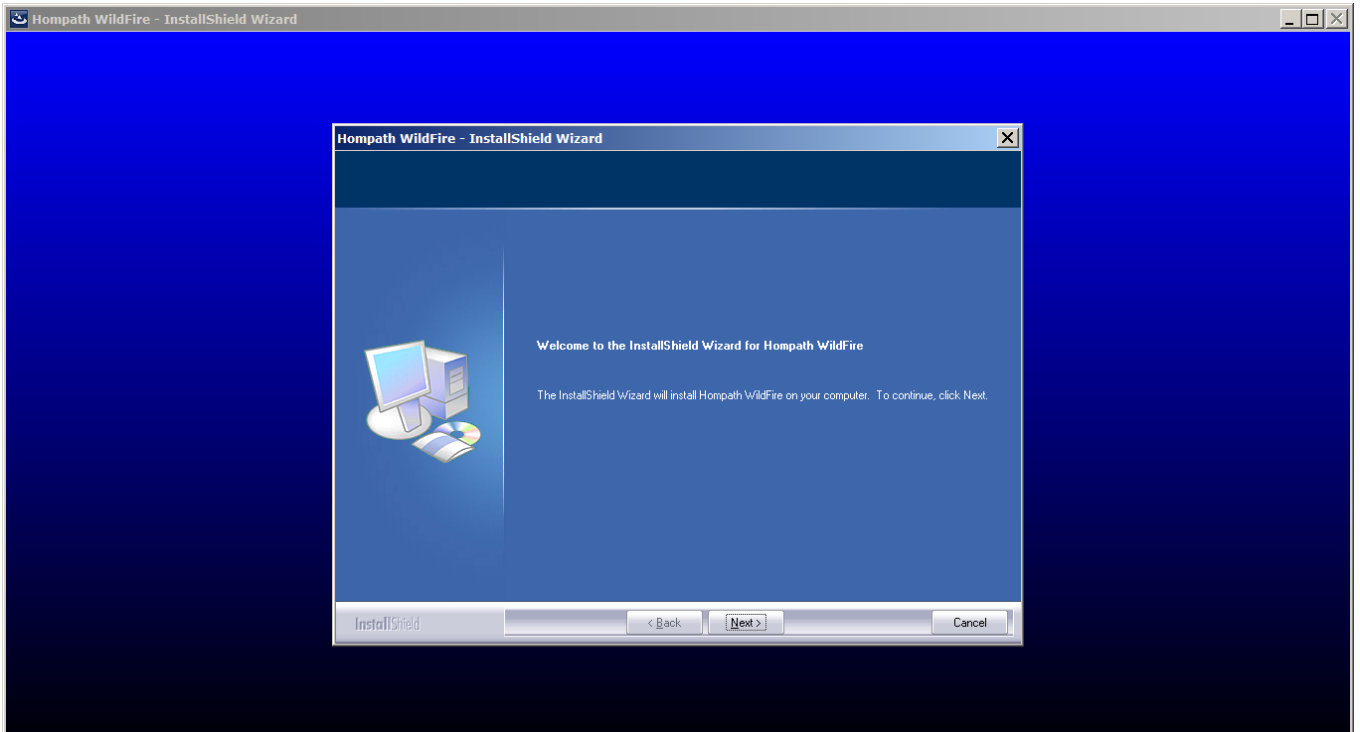
1. Double click setup.exe to start installation process.



2. The InstallShield Wizard now begins.

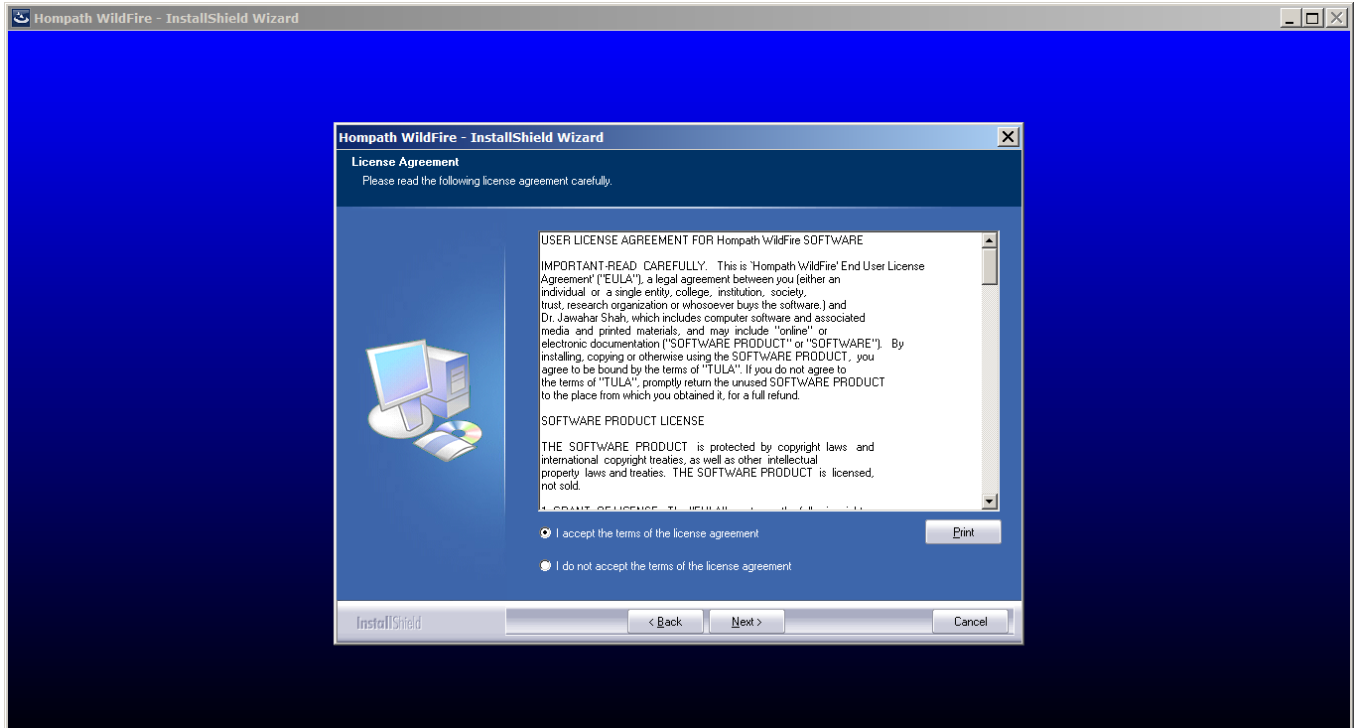


3. Following screen will be presented. Click on *Next* to continue with installation process.

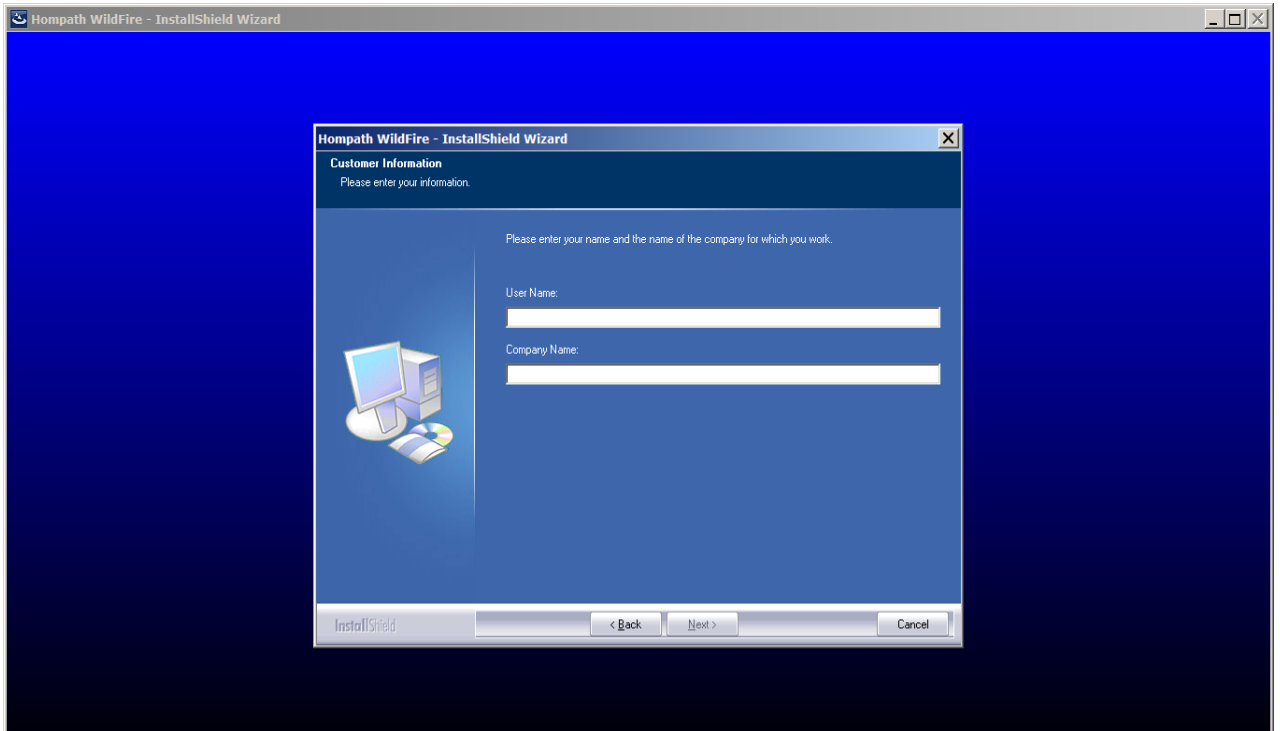


4. Following screen displays the license agreement details. Read the License agreement carefully, and check on “I accept...” when Ready.

Click on *Next* to proceed further.

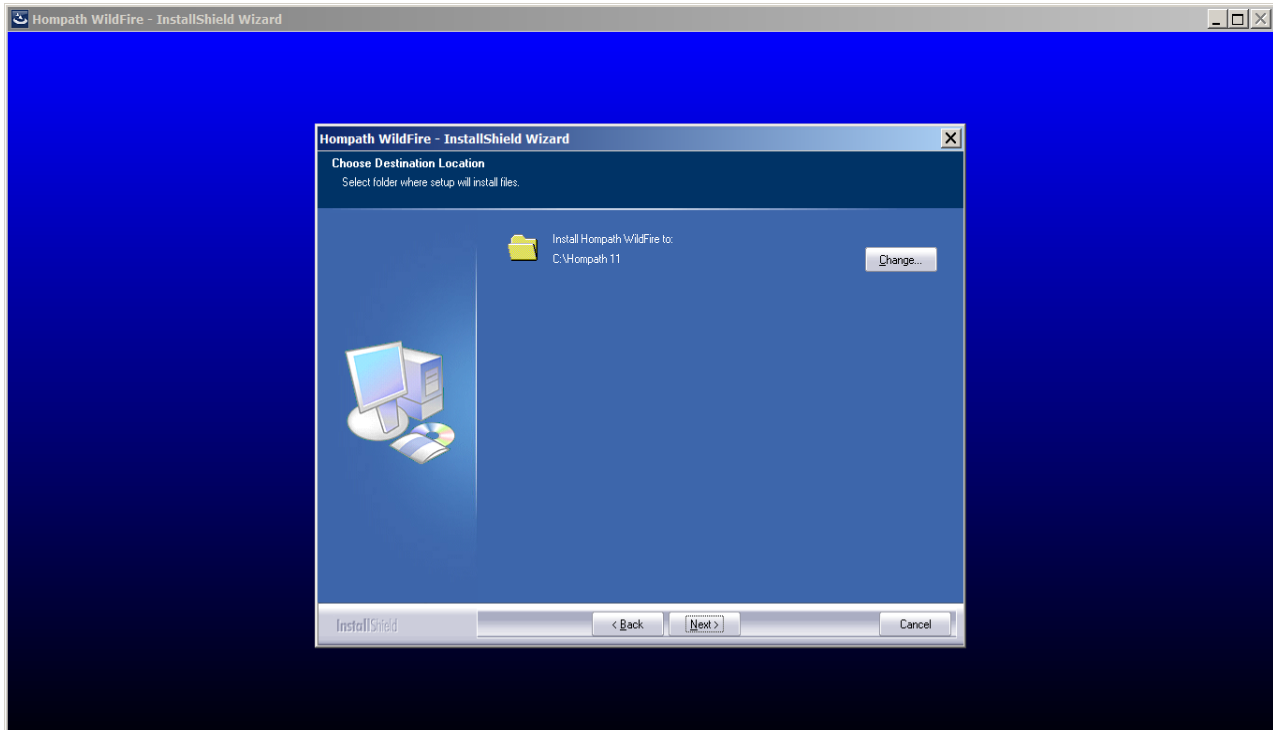


5. Enter your Username and Company information in the presented screen and click on *Next* to continue.

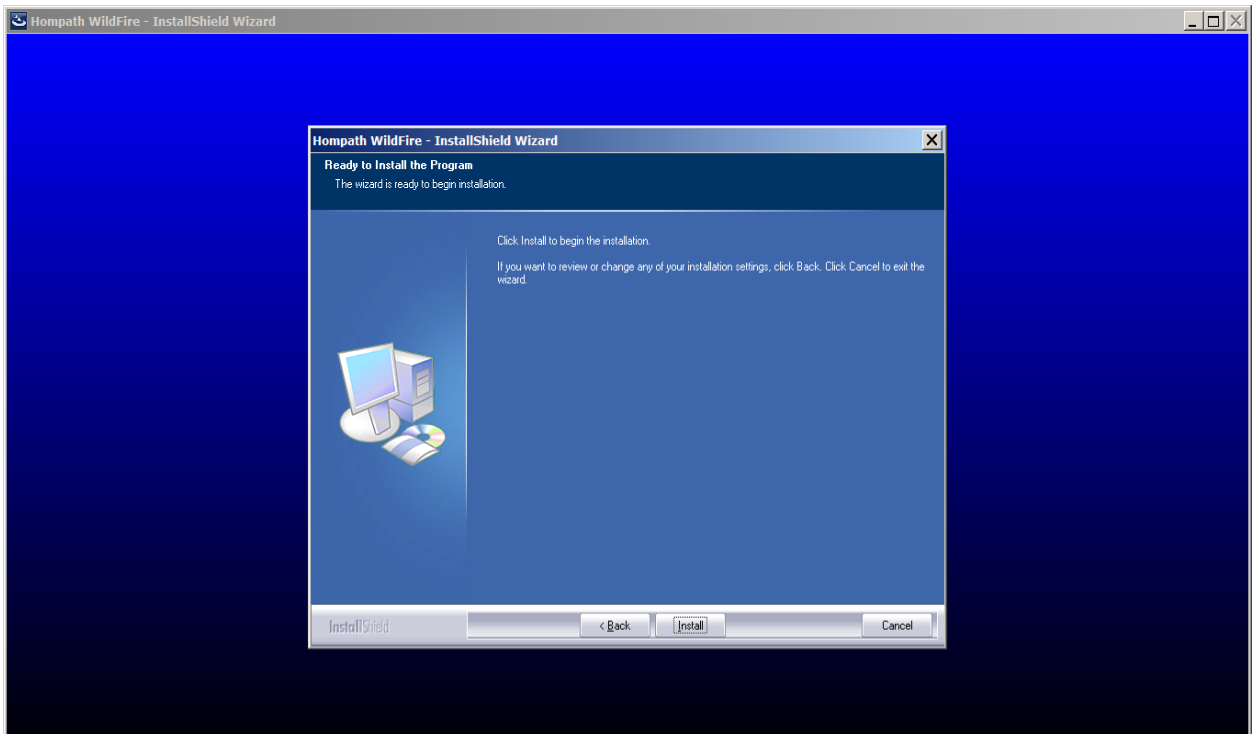


- This screen allows you to select the target directory where Hompath software will be installed. Choose the target directory where you need the application to be installed or you keep the path as it is presented by default in this screen.

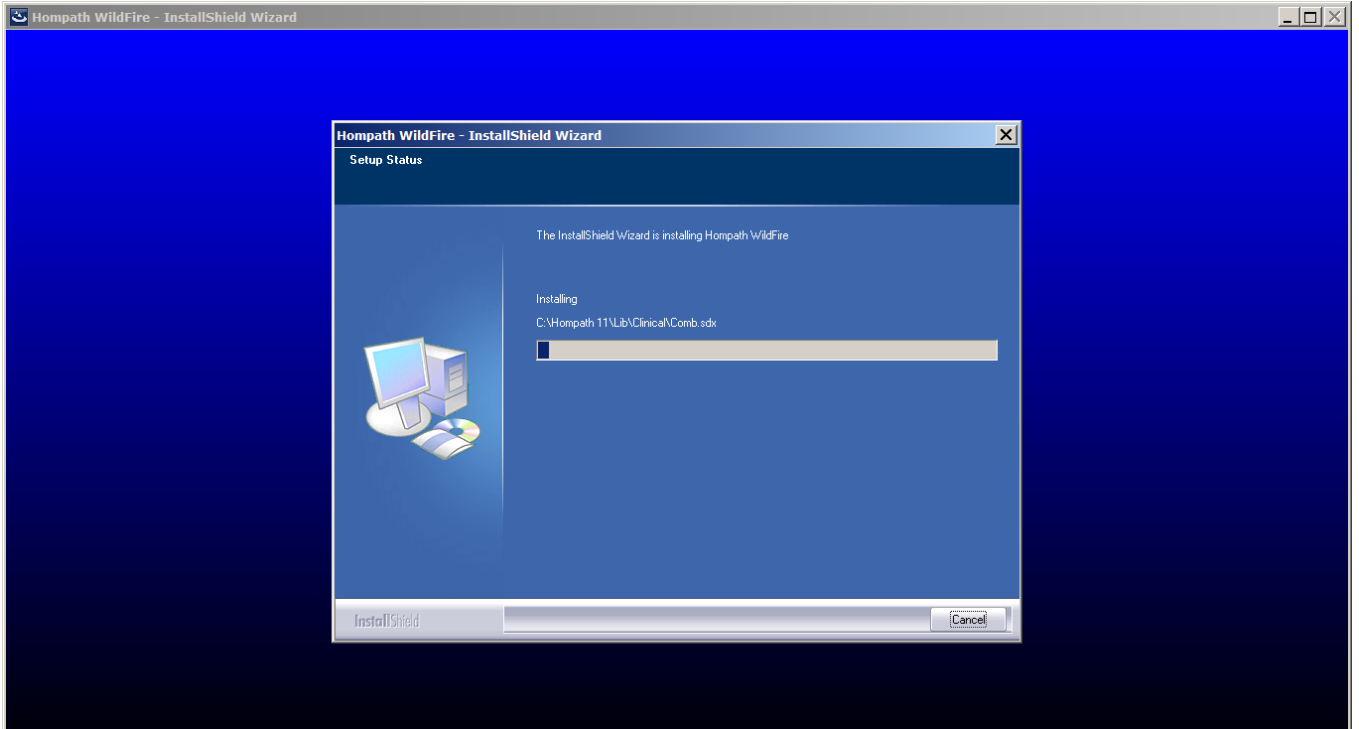
Click *Next* to proceed further once you have selected the path.



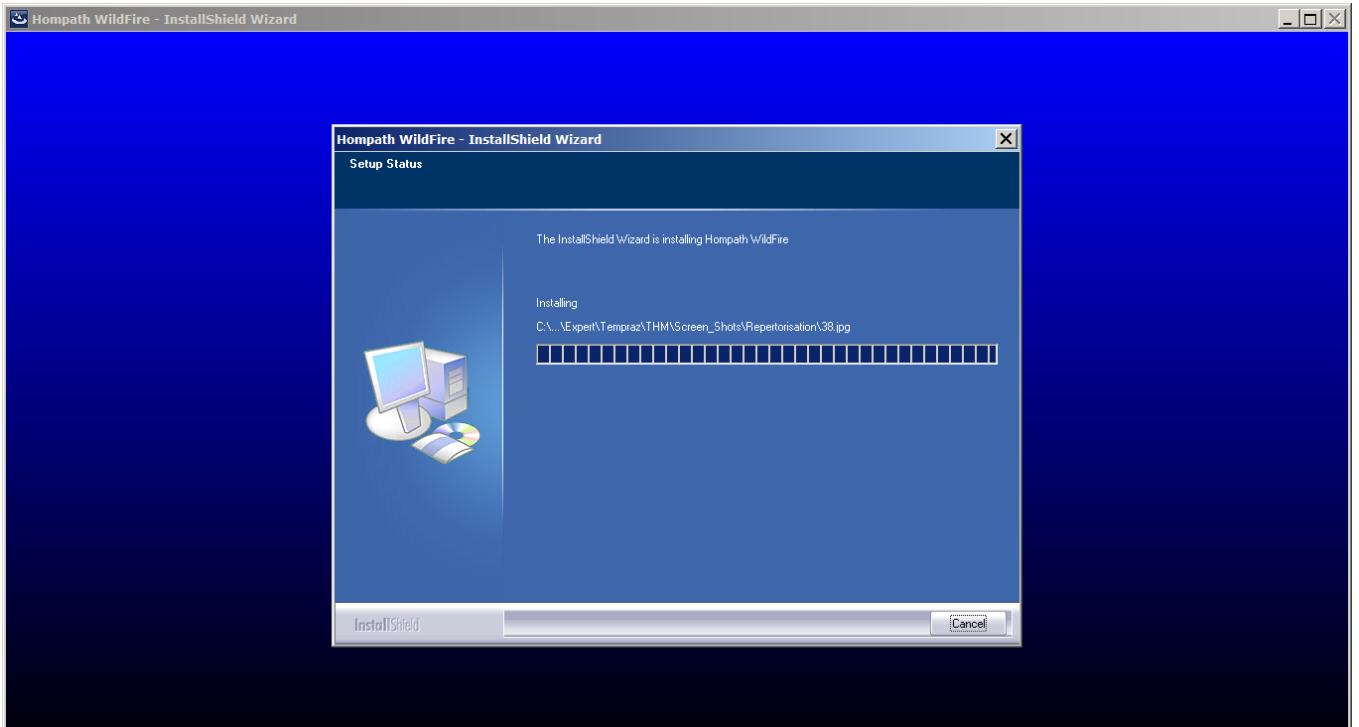
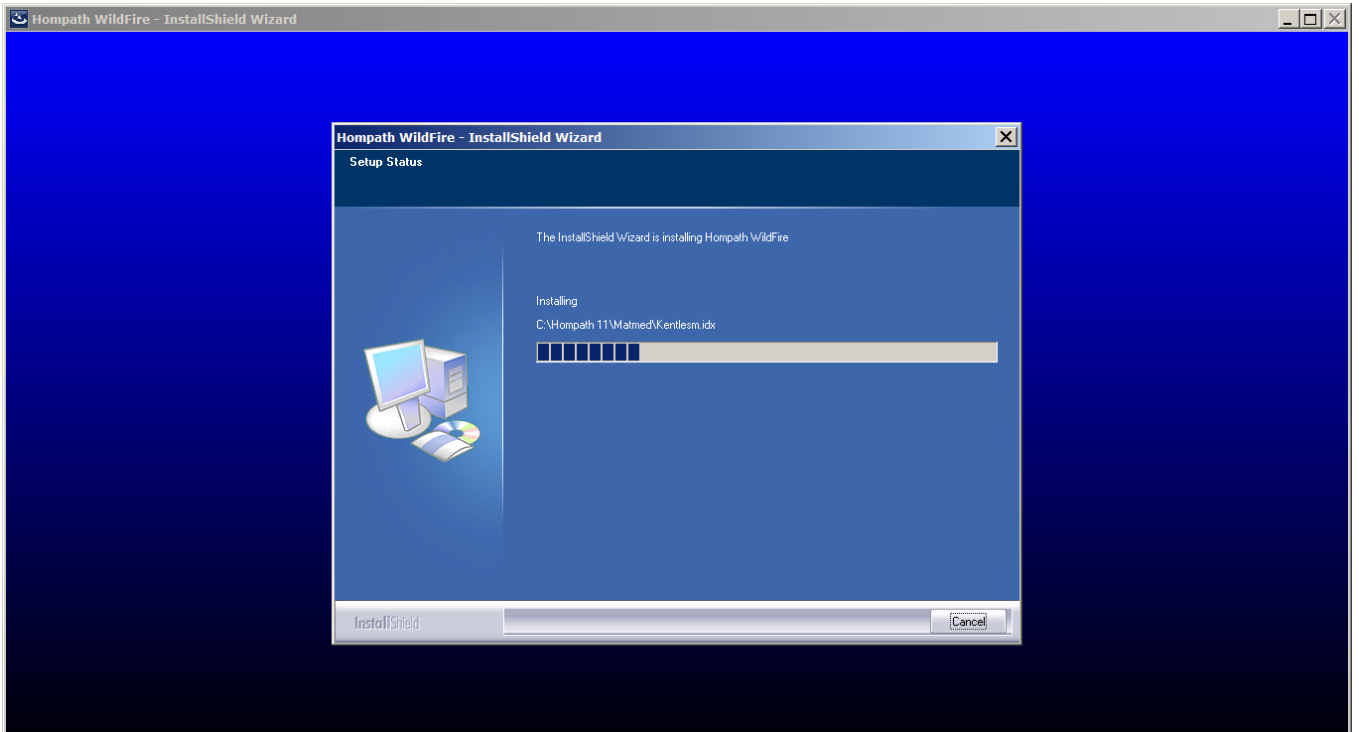
7. Click on *Install* to begin installation process.



8. The installation process has will start now. The following screen shows the progress of installation of software.

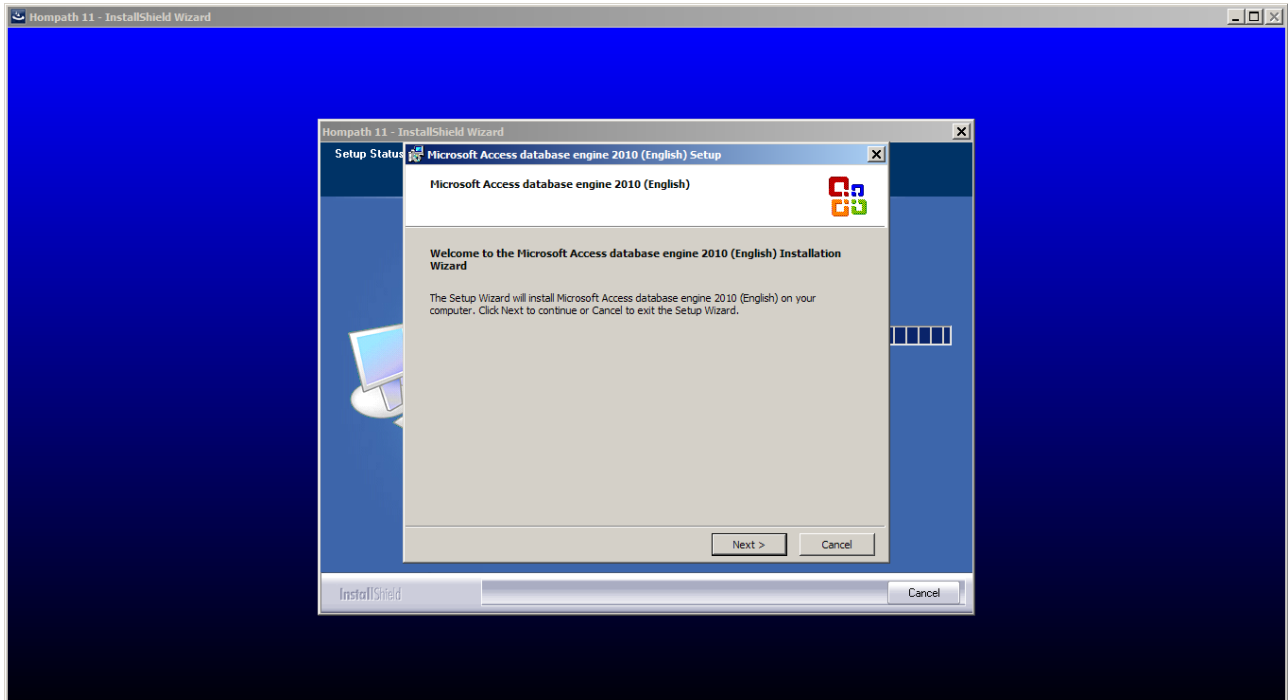


9. Please be patient during the process as the setup progresses.



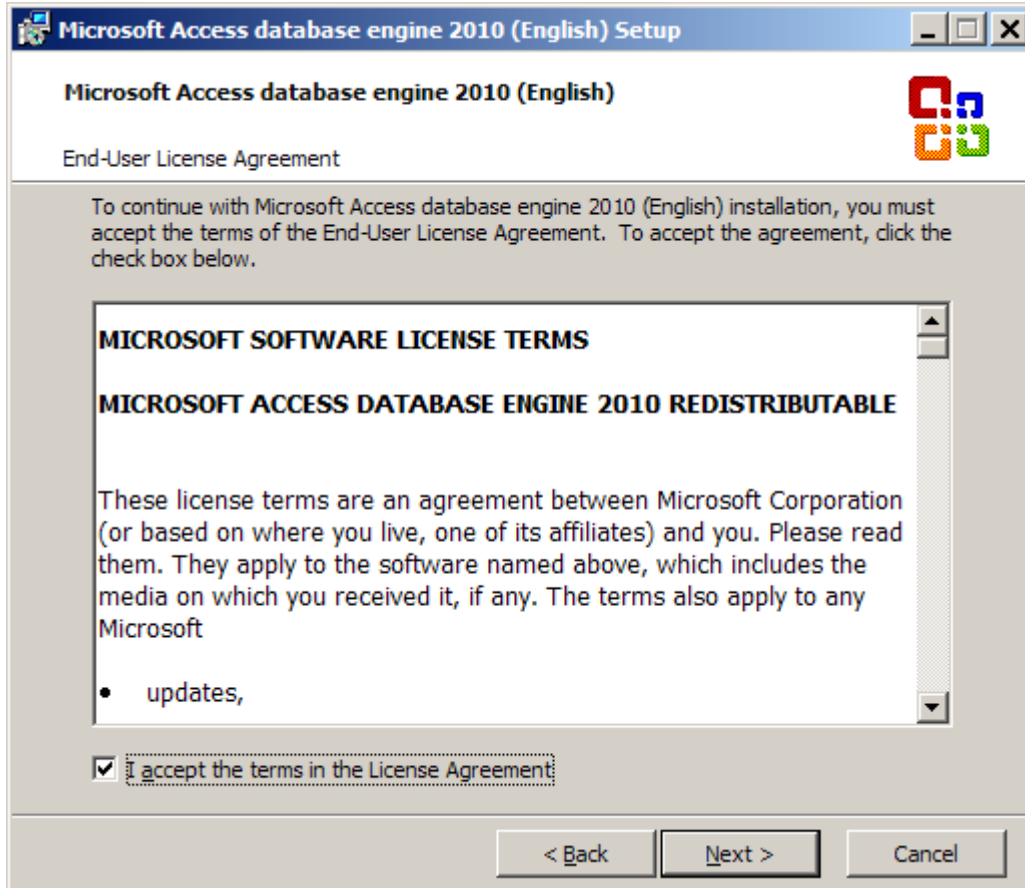
10. The InstallShield will now ask for installing **Access Database engine driver**.

Just click on *Next* here.

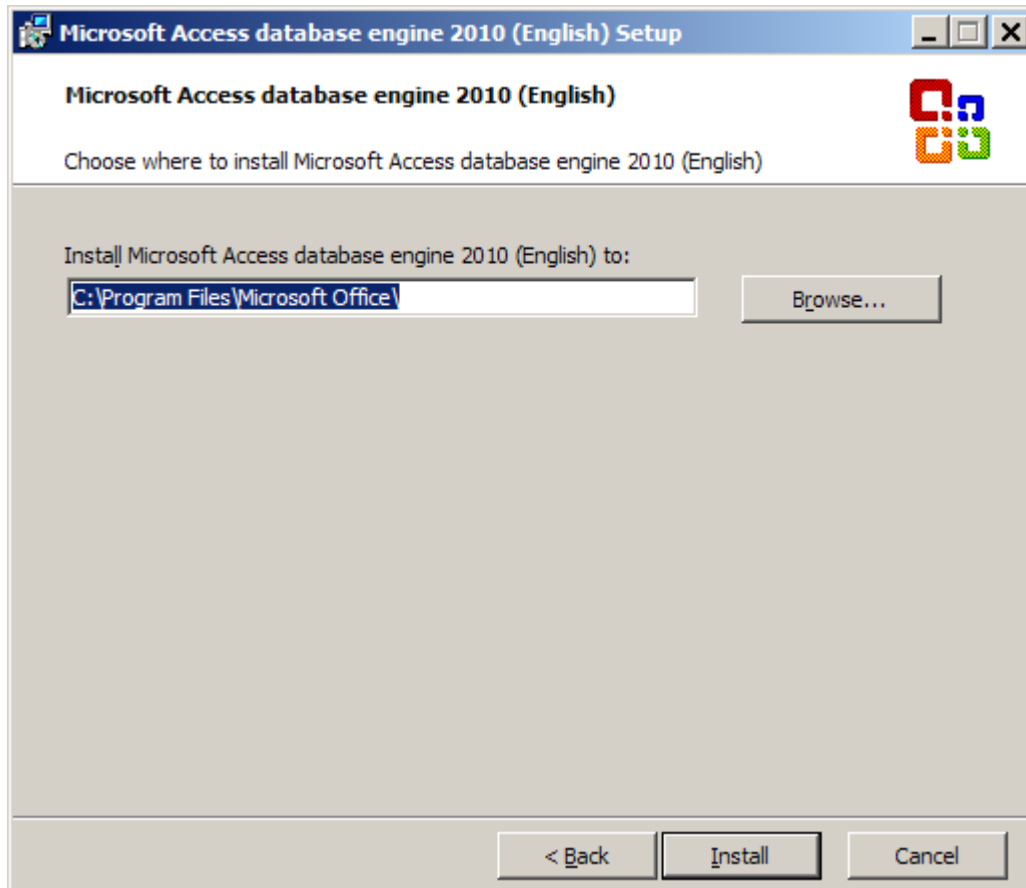


11. Read the License Terms and check “I accept ...” when you are ready.

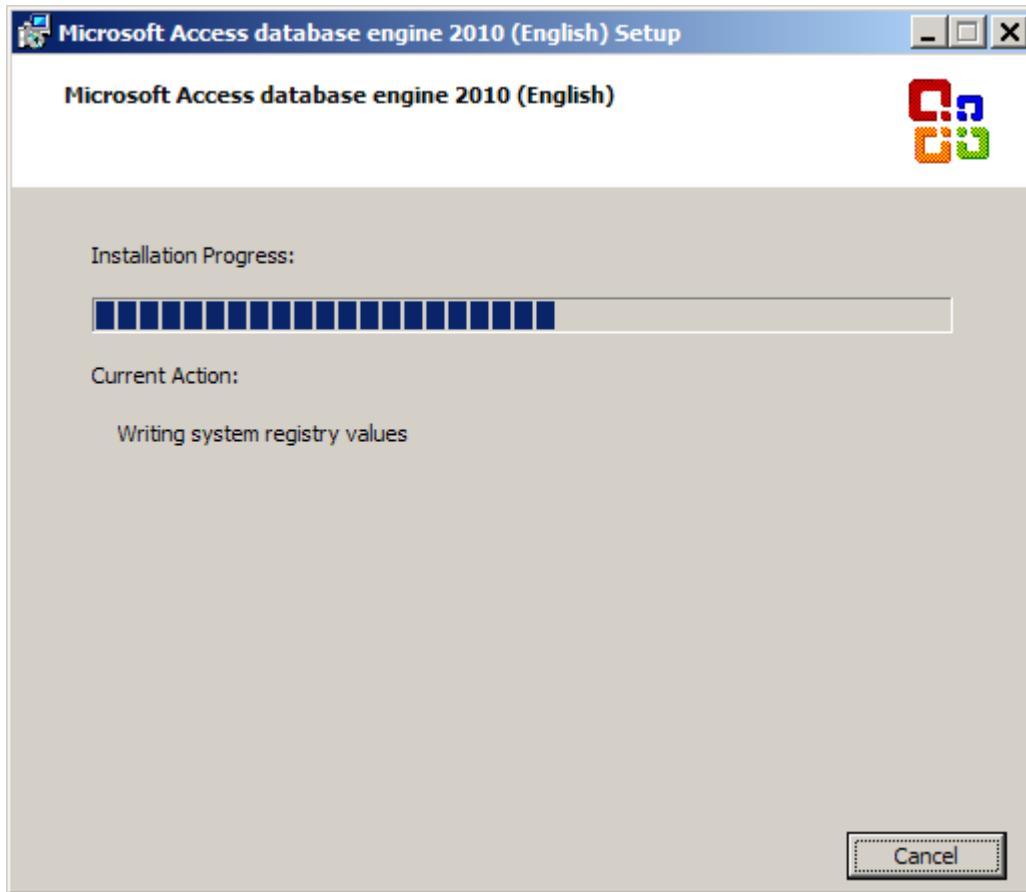
Click on *Next* to proceed further.



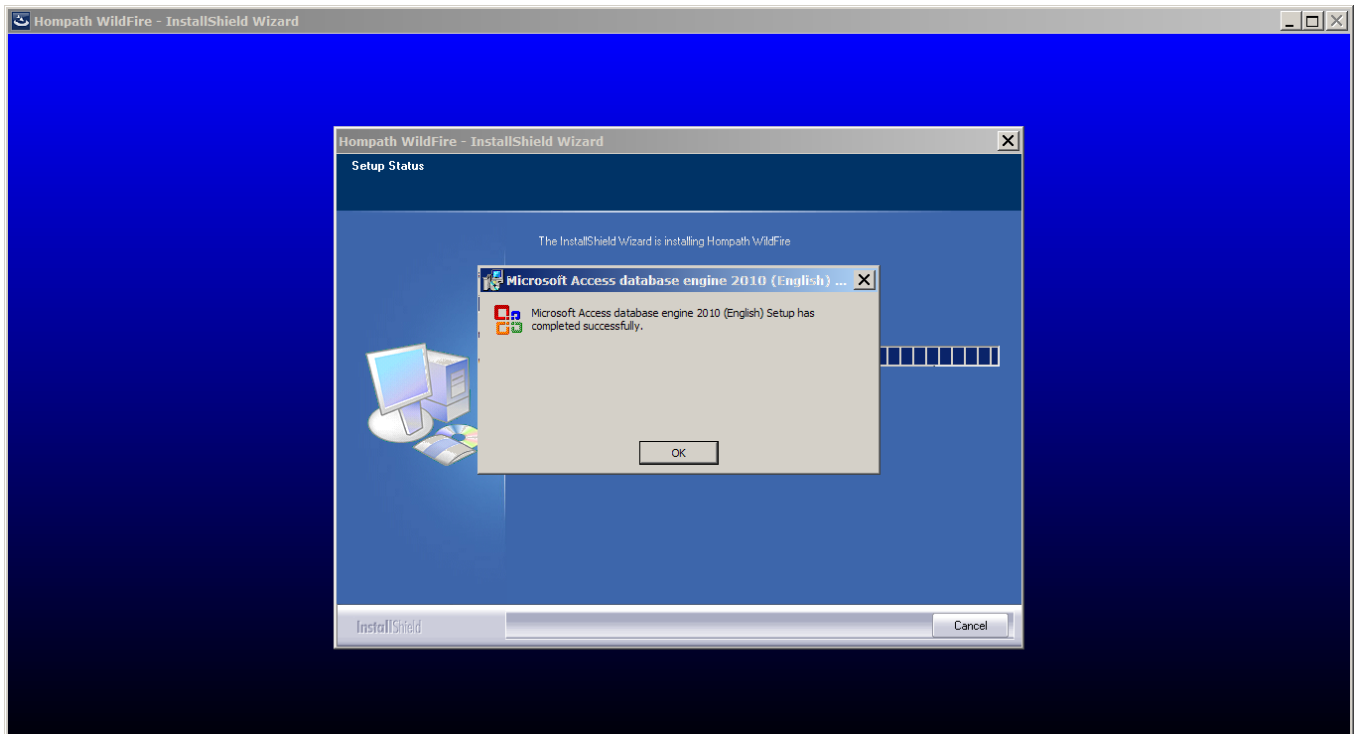
12. Click on *Install* to start Access Database driver setup.



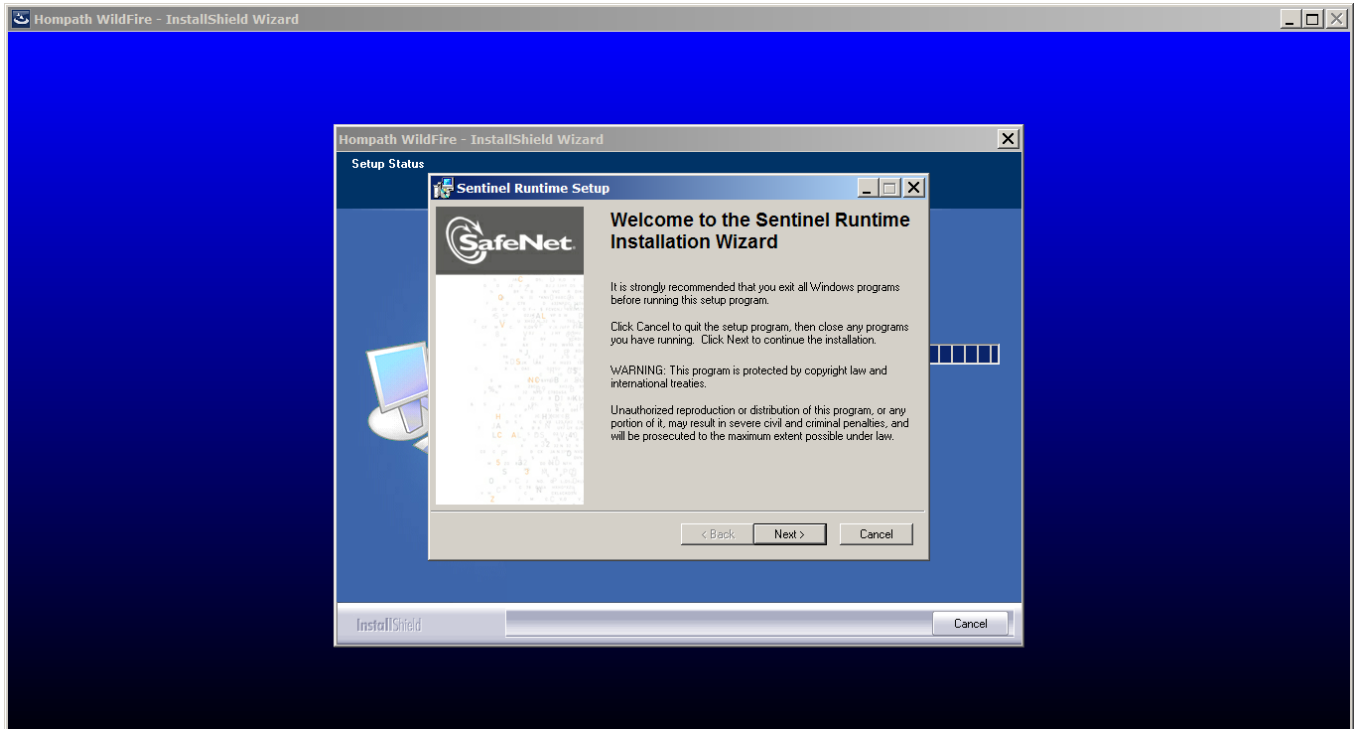
13. This will now install Microsoft Access drivers. Please wait during the process.

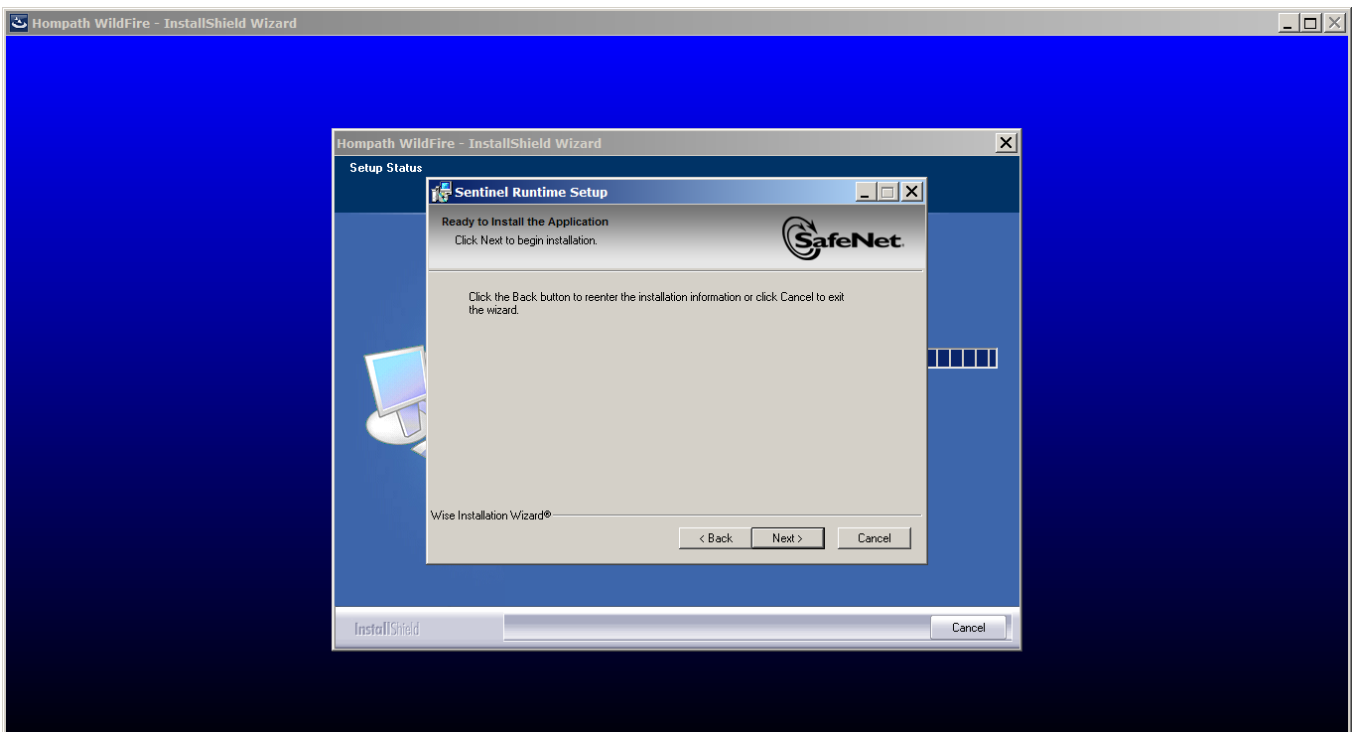
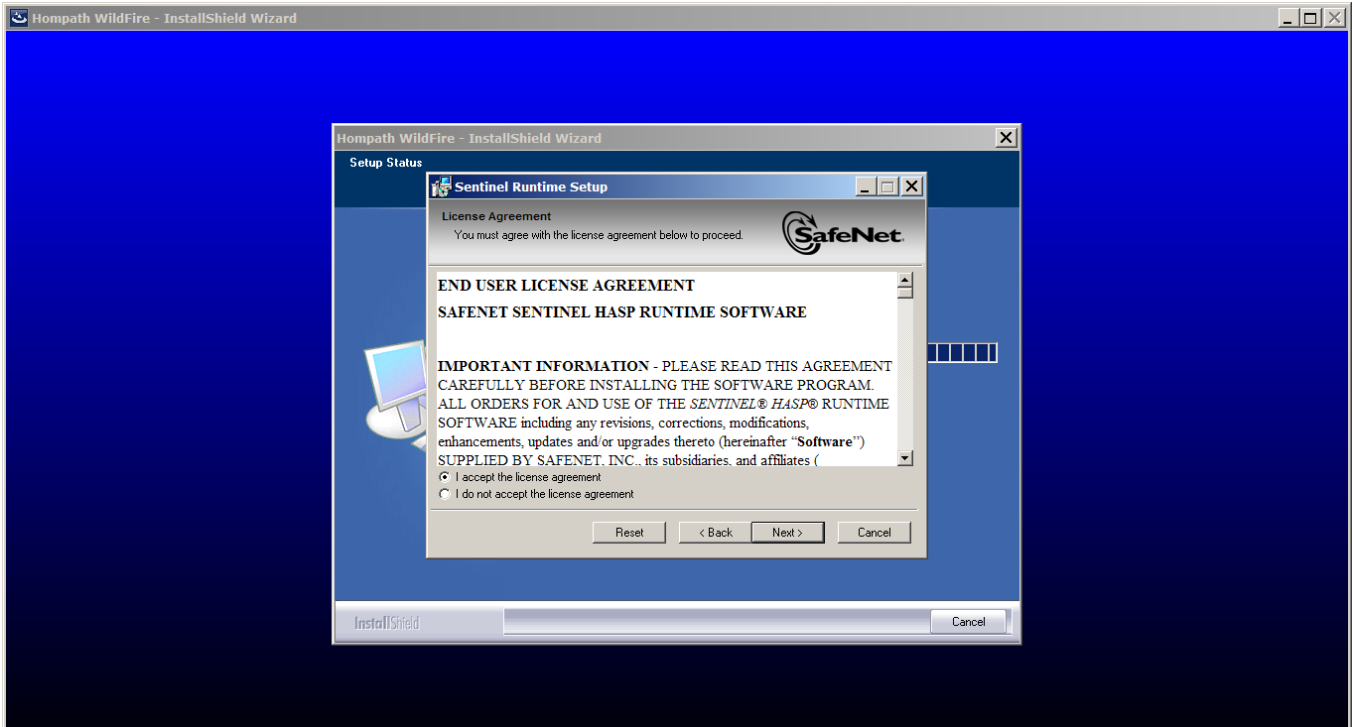


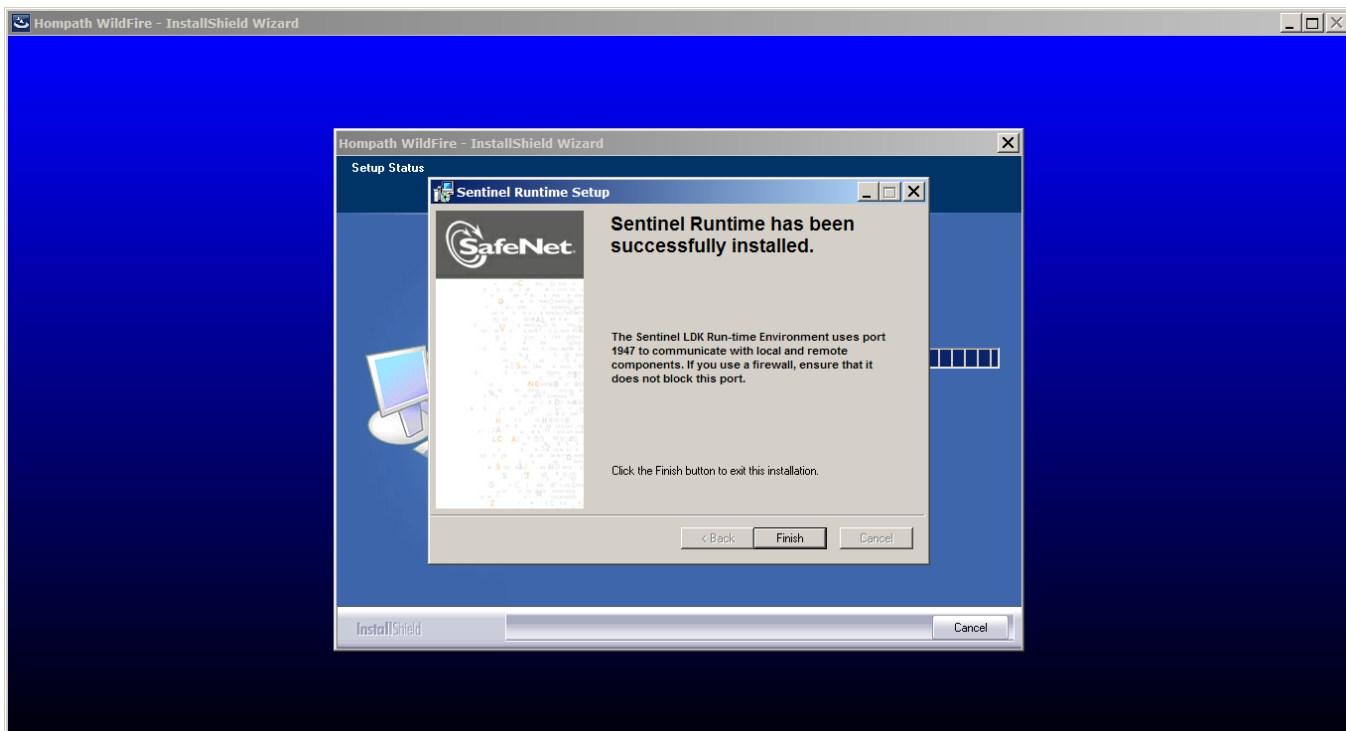
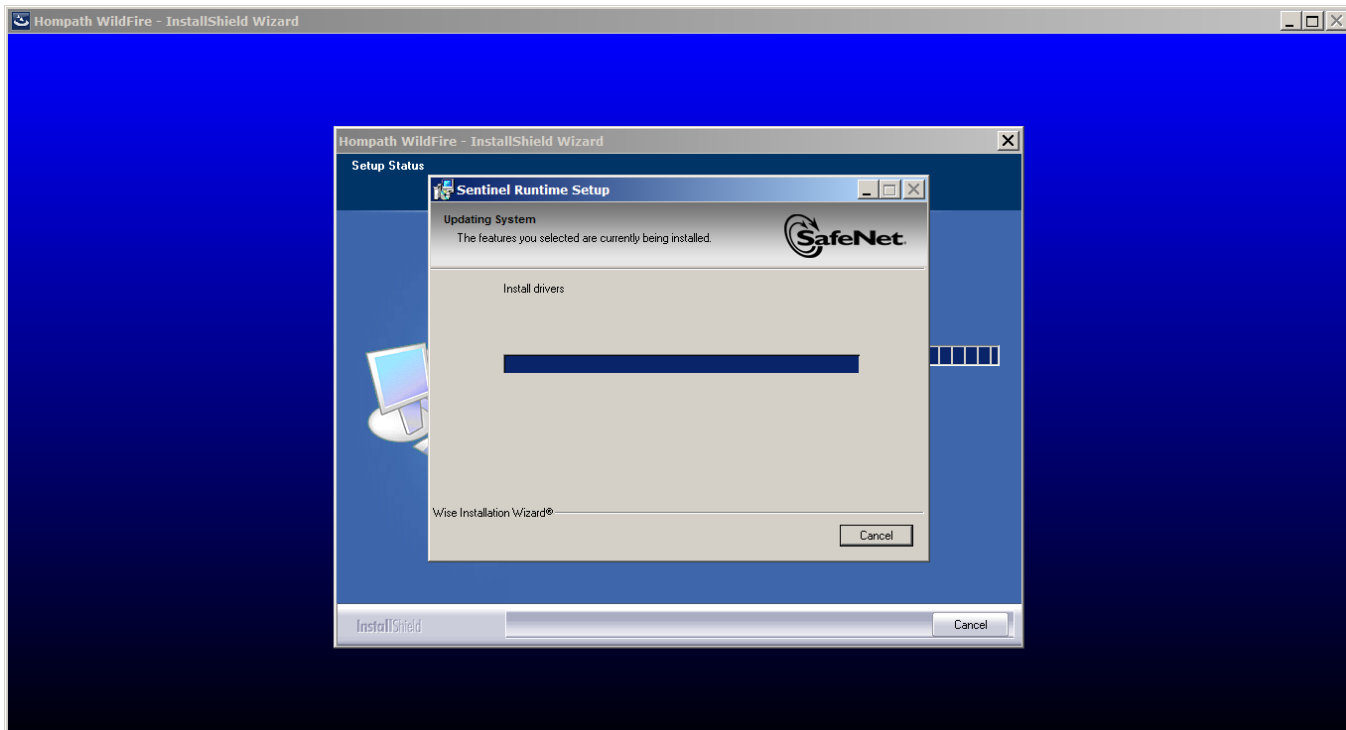
14. Click on **OK** when Access Database driver setup is complete.



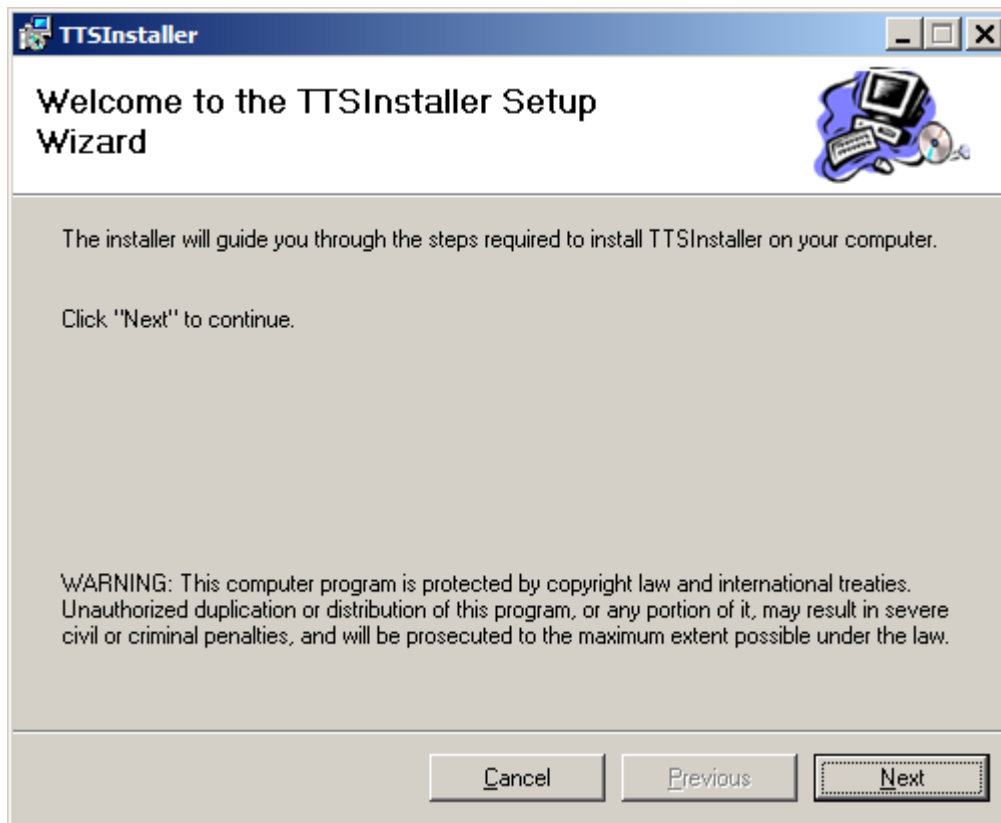
15. Click on **Next** to start installing Sentinel HASP Run-time driver. Please do not cancel this step. These drivers need to be installed for the lock (dongle key) to work correctly.





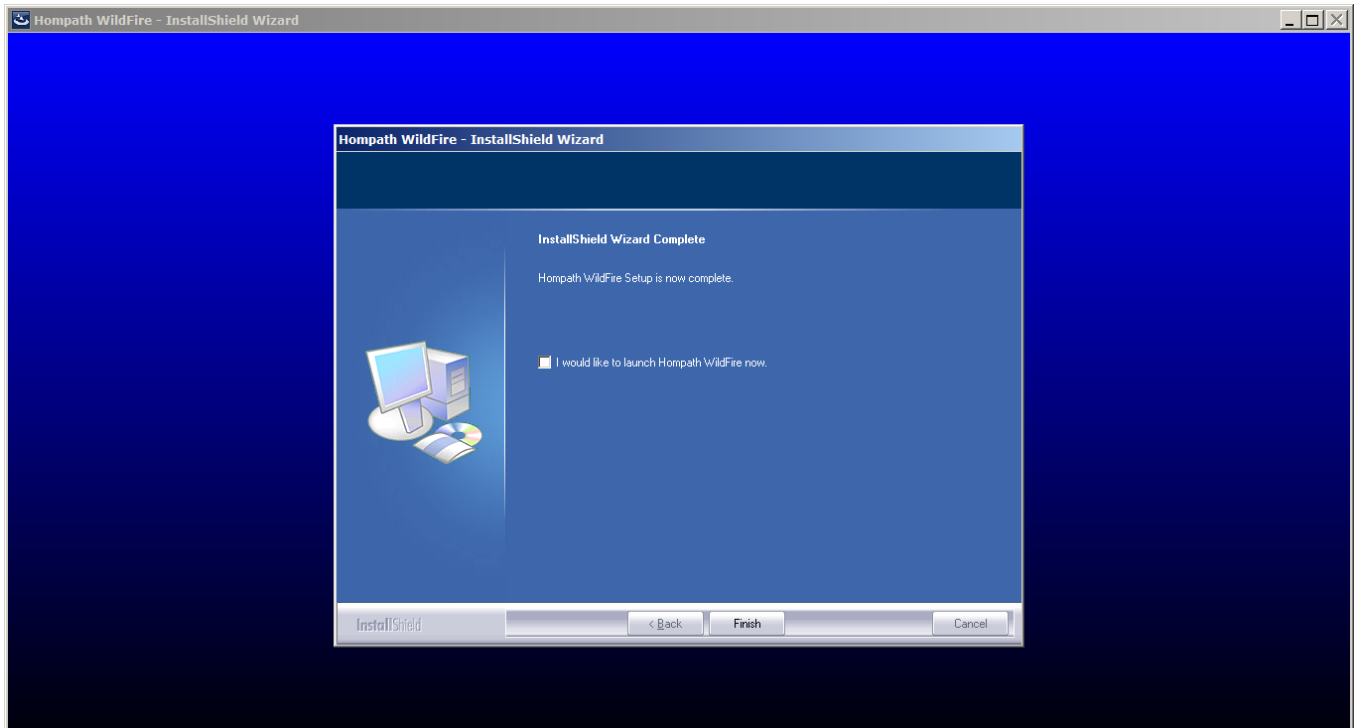


16. Similarly proceed with **TTSInstaller** setup.



17. Check on *“I would like to launch Hompath WildFire now.”* to start application.

After this click on *Finish* to complete the setup.



The software is now ready to launch and use.

Software Key

Hompath Software comes with the USB Dongle which is required to start the software. Please protect the key safely.

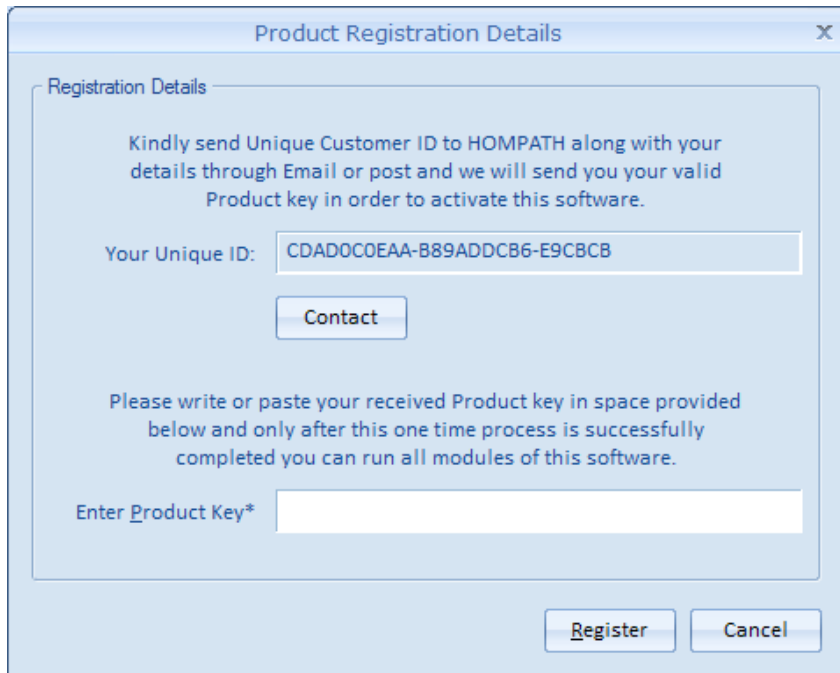
Please insert the Dongle before starting the software.

Registration of Software

Hompath [Version] requires the registration of the software for the first time. So on starting an application for the first time the application asks for user registration where you will have to enter your Product Key.

Please follow following steps to generate the Product Key for your software.

1. The software generates a Unique ID for your software as shown in below image.



Product Registration Details

Registration Details

Kindly send Unique Customer ID to HOMPETH along with your details through Email or post and we will send you your valid Product key in order to activate this software.

Your Unique ID: CDAD0C0EAA-B89ADDCB6-E9CBCB

Contact

Please write or paste your received Product key in space provided below and only after this one time process is successfully completed you can run all modules of this software.

Enter Product Key*

Register Cancel

2. Please mail your Unique ID to Hompath support at support@hompath.com or call Hompath support number provided in the package box to get the Product Key.
3. Once you receive the Product Key, Please enter it in the “Enter Product Key” text box and click on Register Button.
4. **Now the Software will start and is ready to use.**

For any assistance, please contact Hompath Support using following contact details.

Hompath Support Team

Mind Technologies [Hompath]

8, New Hari Niwas,

Dattatray Road, Santacruz (W),

Mumbai - 400 054, INDIA

Telephone : 022 - 2661 4532 / 2661 6561 / 3263 5001 / 91 098690 71606

Fax : 022 - 2660 6988

Email : support@hompath.com

Website : www.hompath.com